

LOCATION MAP



Developed by:-

AIMS ANGEL INFRA TECH LLP

Site Office:- I-1, GH-04, Sector-4,
Greater Noida (West), Uttar Pradesh - 201308

Tel.: +91-9700905555

E-mail: info@centralplazahighstreet.com

Web: www.cencentralplazahighstreet.com

PROMOTERS RERA NO. UPRERAPRM61450

PROJECT RERA NO. UPRERAPRJ17739

Disclaimer: The elevations, designs, plans and dimensions are as per current sanctioned approvals and plans, specifications, amenities and facilities will be set out in the agreement for sale and image are artistic impressions and purely for representational purposes. The same may be subject to alterations/changes/revisions in terms of directions, approvals, orders and/or regulations of the concerned/relevant authorities, and/or for compliance with laws/regulations in force from time to time. In view of the above, and in line with our customer policies, we may change/alter the above in consonance with approvals, orders, directions, applicable laws, regulations, etc. Unless otherwise stated, all the images, visuals, materials and information contained herein are purely artistic/ creative concepts and may not be actual representations of the product and/ or any amenities. None of the above may be construed to form any basis of or serve as an inducement or invitation for payment of any advance and/ or deposit, to be made by a prospective customer, under relevant provisions of law or otherwise. Solely the amenities/ specifications, features mentioned in the agreement for sale (if any) shall be final. For more information refer to <http://www.up-rera.in/>





GIVE YOUR VENTURE A GOOD START ... WITH CENTRAL PLAZA TODAY

Central Plaza is a business oriented and luxury personified hub. The lifestyle of the mankind gets a facelift with contemporary livelihood that starts with us and continues to be with them in their every moments. Your dream space is located in 100% commercial zone providing you with surplus opportunities of business pursuit, shopping and fine dine.

An exemplary amalgamation of livelihood and recreation under one roof, just a few steps away, for yourself and for your loved ones.



WHY TO CHOOSE US.....

PROJECT HIGHLIGHTS/ KEY FEATURES

- Located in Greater Noida (West). • Very Close to Proposed Metro Station.
- Wide Frontage. • Construction in Full Swing. • Road Visibility to all the Shops.
- 3 side open retails, right at the second round about.
- Provision of car parking space across 2 levels.
- Varied entry/exit, ATMs in the vicinity, help-desk counters.
- Lowest (Nearly Negligible) Maintenance Cost / CAM.
- Approx. 2,00,000 Families in the Immediate Territory of Noida Extension.



THE PERFECT BLEND

HYPER MARKET

A one-stop shopping experience
Wide variety of products such as appliances, clothing and groceries.

SHOPPING

Wide range of brands- from elite to standard
Maximum visibility with no blind spots
Considerately designed big atriums with shops on either sides

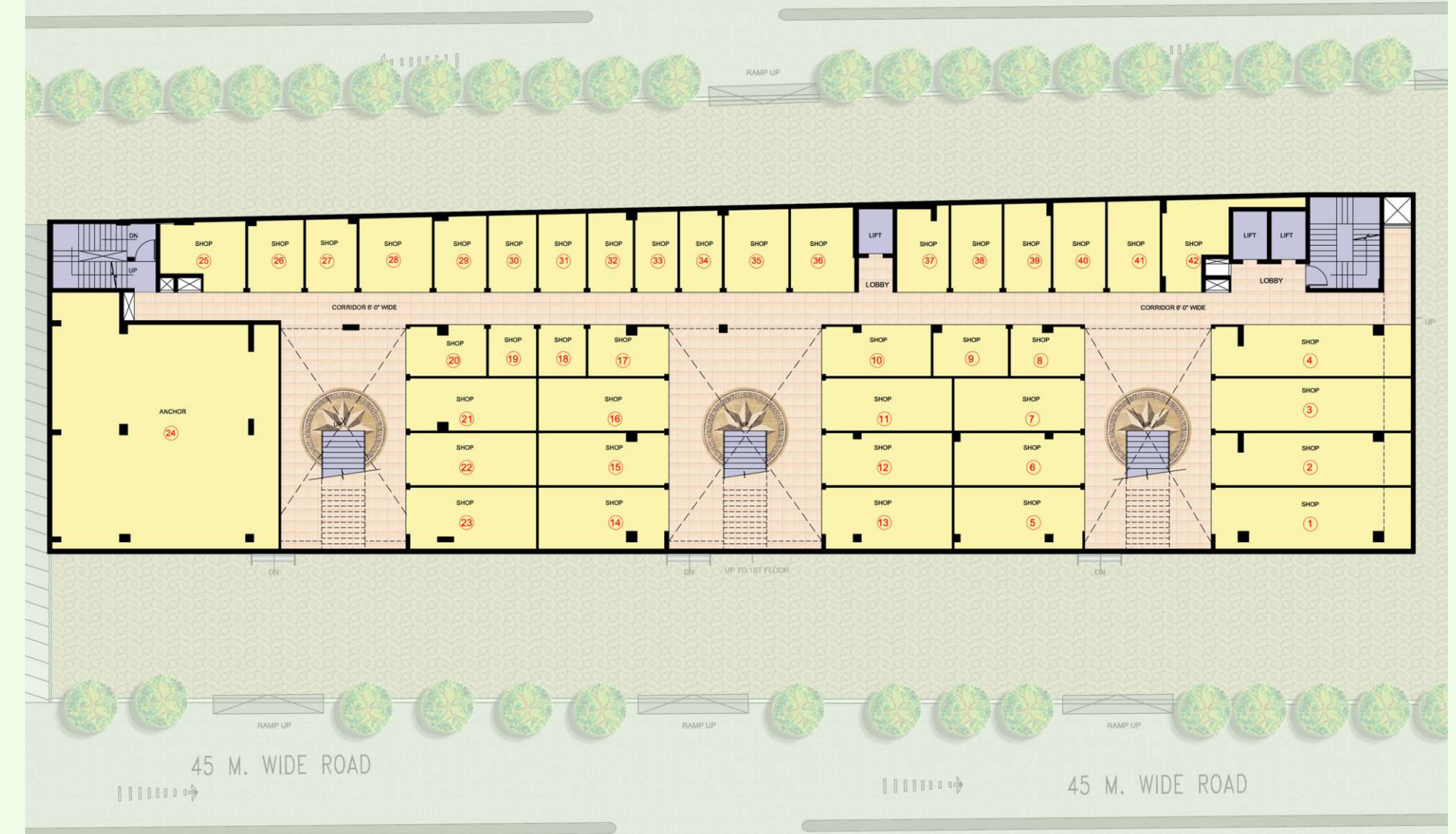
FOOD COURT/ RESTAURANT

Plethora of food courts to suit everyone's taste with array of choices
Big theme restraints
Side walk cafes

SITE PLAN



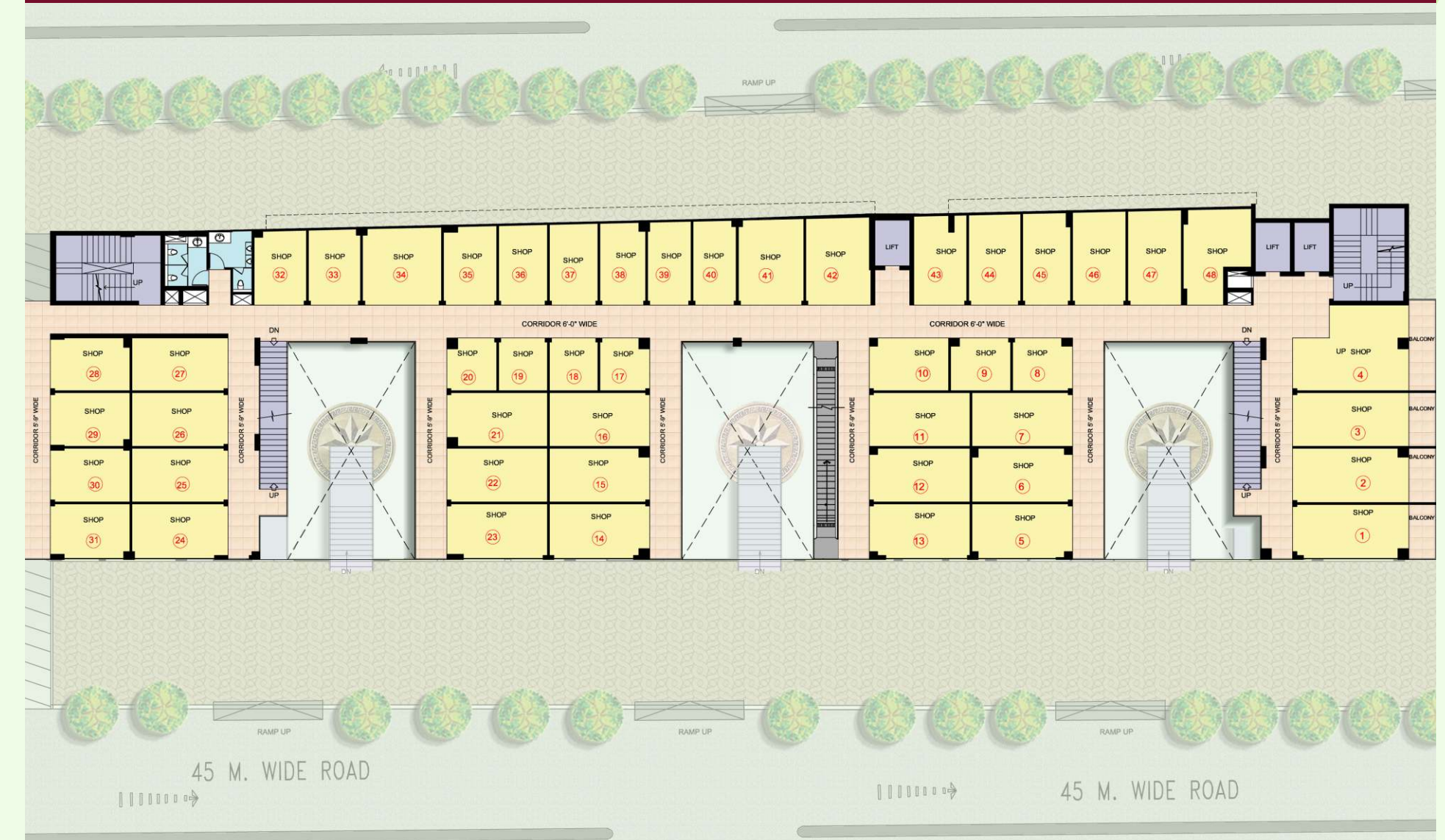
LOWER GROUND FLOOR PLAN



GROUND FLOOR PLAN



FIRST AND SECOND FLOOR PLAN



THIRD FLOOR PLAN



FOURTH FLOOR (FOOD COURT)

